



**SKIRMETT**  
WASHROOMS

# S7 Triple-Blade



Other available colours:

## Technical Specifications

Voltage	220/240v - /50Hz
Power	1,760 W (8 A)
Net Weight	9.55kg
Dimensions D x W x L	195 x 300 x 617mm
Noise level	78dB at 1m
Cover Material	ABS Plastic Polymer

## Hand drying in under 10 seconds.

3 blades of air strategically placed, with water collection as standard as well as Microban antimicrobial protection, inhibiting the growth of bacteria, mould and mildew.

The S7 Triple-Blade is available in 13 different colours and is fully compatible with ZeroGel – a neutralising gel pack which eliminates bad odours and leaves the user with a more pleasant washroom experience. The Microban antimicrobial protection is impregnated at the manufacturing stage. Microban treated products are tested for their efficacy in accordance with internationally recognised standards.



High Speed Drying



Microban Antibacterial Protection



Fragrance System



Extensive Colour Range



HEPA Media Filter  
(Optional extra, sold separately)



Run cost (£)  
(per annum)



Drying time  
(seconds)



Warranty  
(years)\*



Carbon Emission (kg)  
(per annum)\*\*

\* Years 1-3 parts and labour years 4-7 parts only  
\*\* Based on an average of 150 uses per day over 365 days per year



S7 Triple-Blade



S7 Triple-Blade with AirGuard

## S7 Triple-Blade Specification

<b>Finishes</b>	Snow White	Silver Aluminium
	Silver Aluminium Matte	Champagne
	Black	Red F1
	Red Cherry	Red Bourdeaux
	Atlantic Blue	Deep Blue
	Sky Blue	Pumpkin
	Metalised Chrome	
<b>Construction</b>	Materials	ABS Polymer
	Net Weight	9.55kg
	Packed Weight	11 kg
<b>Dimensions</b>	Product Height	617mm
	Product Width	300mm
	Product Depth	195mm
	Packaging Height	710mm
	Packaging Width	360mm
	Packaging Depth	265mm
<b>Energy Consumption</b>	Electrical Supply Voltage	220-240 Volts
	Electrical Supply Frequency	50Hz
	Standby Power Consumption	1 Watts

<b>Performance</b>	Minimum Motor Life	1500 Hours
	Dry Time	11 Seconds
	Universal Brush Motor	
	Motor Speed	30000 RPM
	Air Speed (Max Settings)	211 MPH
	Operating Temperature Range	22-25 °C
	Motor Cutoff Time	25 Seconds
<b>Noise</b>	Motor Class	Class 2
	Operating Sound Level	75dB at 2M
<b>Rated Power</b>	Sound Level Notes	Independently tested to be 87dB at 1M
	Rated Power	1760 Watts
<b>Mounting Instructions</b>	Energy per dry	5.38 Wh (Watt-hours)
	Men	900mm
	Women	900mm
<b>Certification</b>	Disabled	750mm
	UKCA, CUL, IPX1	

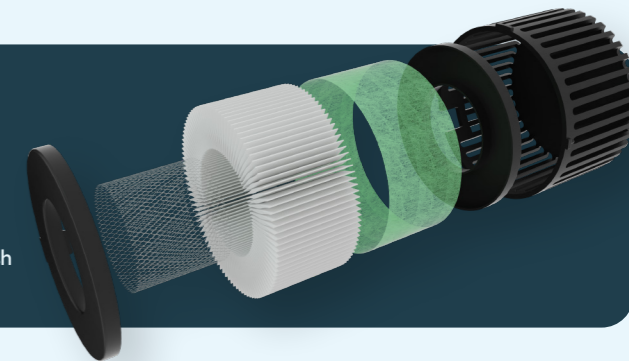
## Consumables & Branding

### Motor Assembly Replacement

For our S7 hand dryer we offer motor assembly replacement.

### HEPA Media Filter Replacement

Need a HEPA media filter replacement for your dryer? No problem. Contact us and we can organise getting you a fresh one once the time comes to replace.



### ZeroGel

ZeroGel is an innovative product that eliminates bad odours and helps to improve air quality within the washroom. This product has the highest level of effectiveness against removing bad odours present, neutralising them, and dispersing a gentle fragrance.

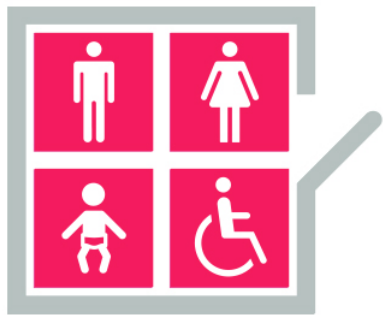


### Adding a logo

We can also have your branding applied to the S7 range upon request, in full colour or just one colour print.

If you would like to find out more about branding your dryers please contact us.





# SKIRMETT

## WASHROOMS

Skirmett Washrooms Bays Platt, Skirmett, Henley-on-Thames, Oxfordshire RG9 6TD. United Kingdom. t. +44(0)1491 638606 e. [info@skirmett-washrooms.com](mailto:info@skirmett-washrooms.com) [www.skirmett-washrooms.co.uk](http://www.skirmett-washrooms.co.uk)